



POULSIL

the bio-active silicium
for broilers

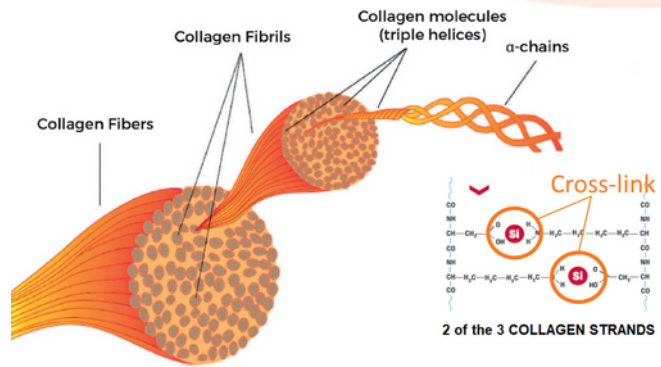


The power of Si

Poulsil is a patented bioactive silicium (Si) that plays an essential part in collagen synthesis.

Silicium (Silicon)

- The component mineral of collagen fibrils cross-linkages.
- Contributes to bone strength and elasticity of connective tissues.
- Essential mineral in collagen synthesis and bone mineralization.



Different forms of Silicium



Chemical element



Chemical element

Silicium dioxide
limited bio-availability in the environment
(Beer, Cereals)



Synthetic form

Modified Silicium dioxide (Poulsil)

Formulated to provide highly bio-available silicium



Bioavailable silicium

Si as a vital component of collagen

Cross-linking with collagen fibrils

Strength and elasticity of connective tissues

Cross-linking with other proteins

Structural stability of bones and eggshells

Collagen Synthesis

Stimulation of enzyme prolyl hydroxylase

Si in bone remodelling

Bone regeneration

Increase bone formation and reduce resorption

Bone density

At physiological levels, improves Ca incorporation in bones

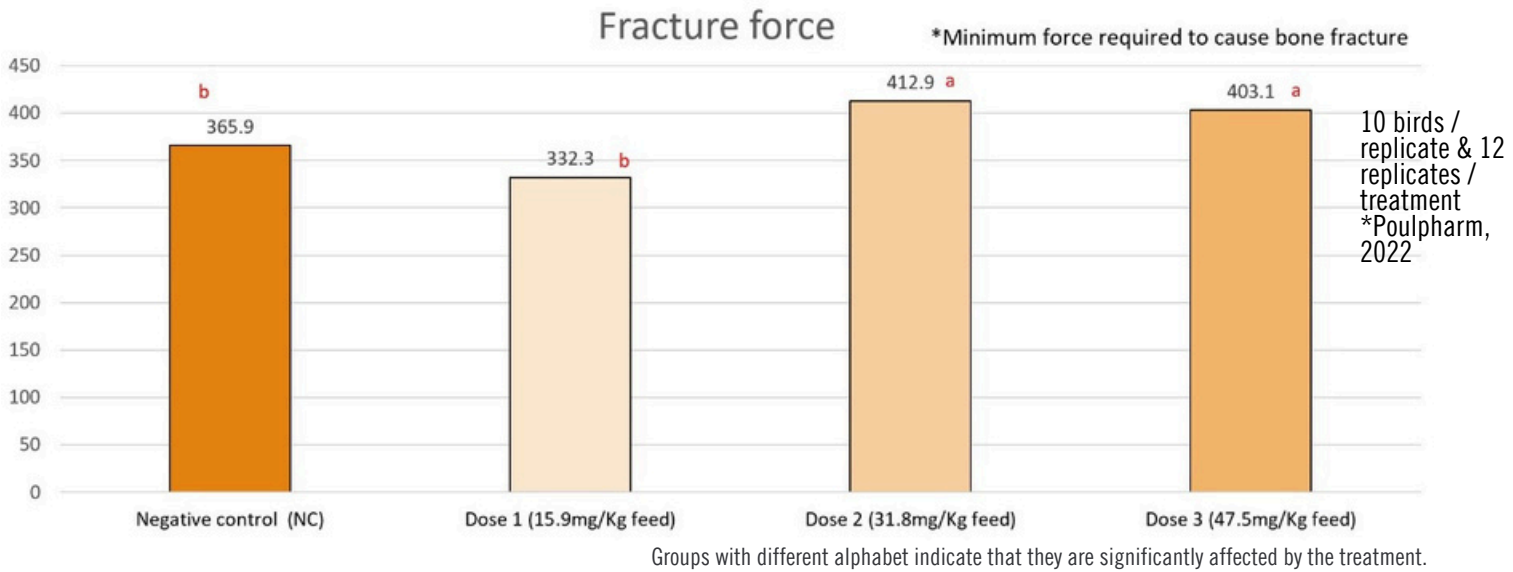
Osteoblast activity

Modulate osteoblast anabolic activity and reduce osteoclastic cells activity



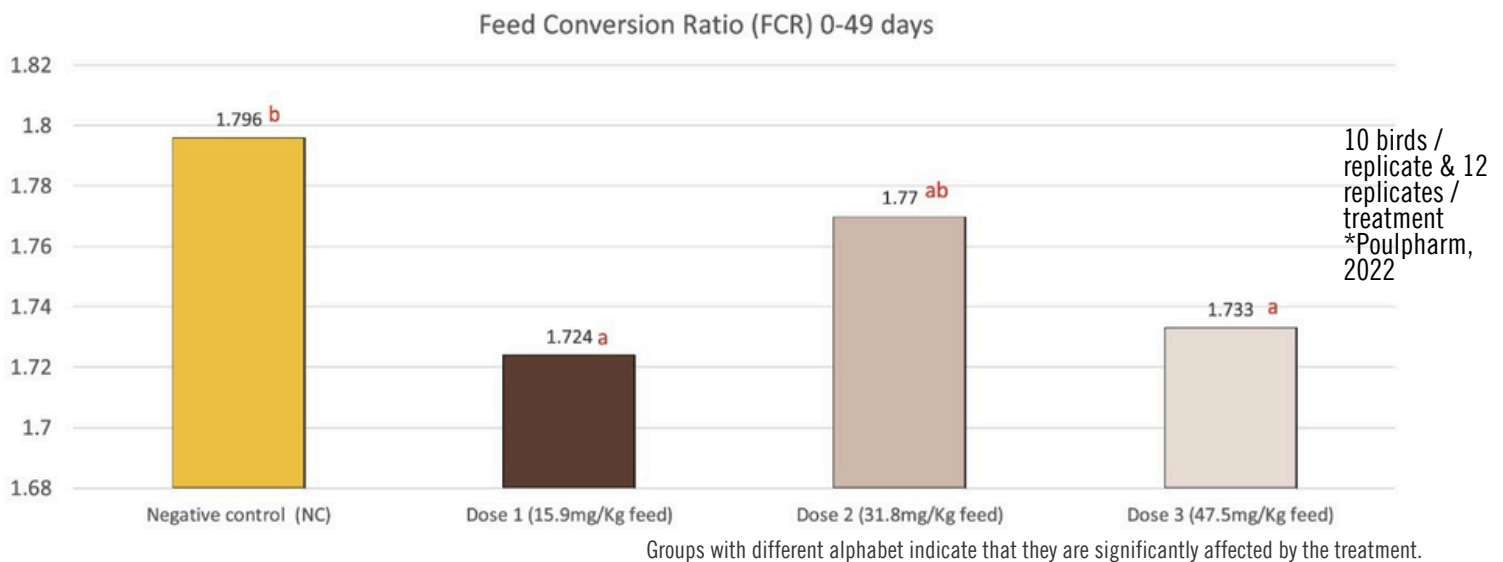
BONE HEALTH TRIAL - Bone strength

Fracture force



Significant improvement in fracture force suggests greater bone strength with Poulsil® supplementation.

PERFORMANCE TRIAL

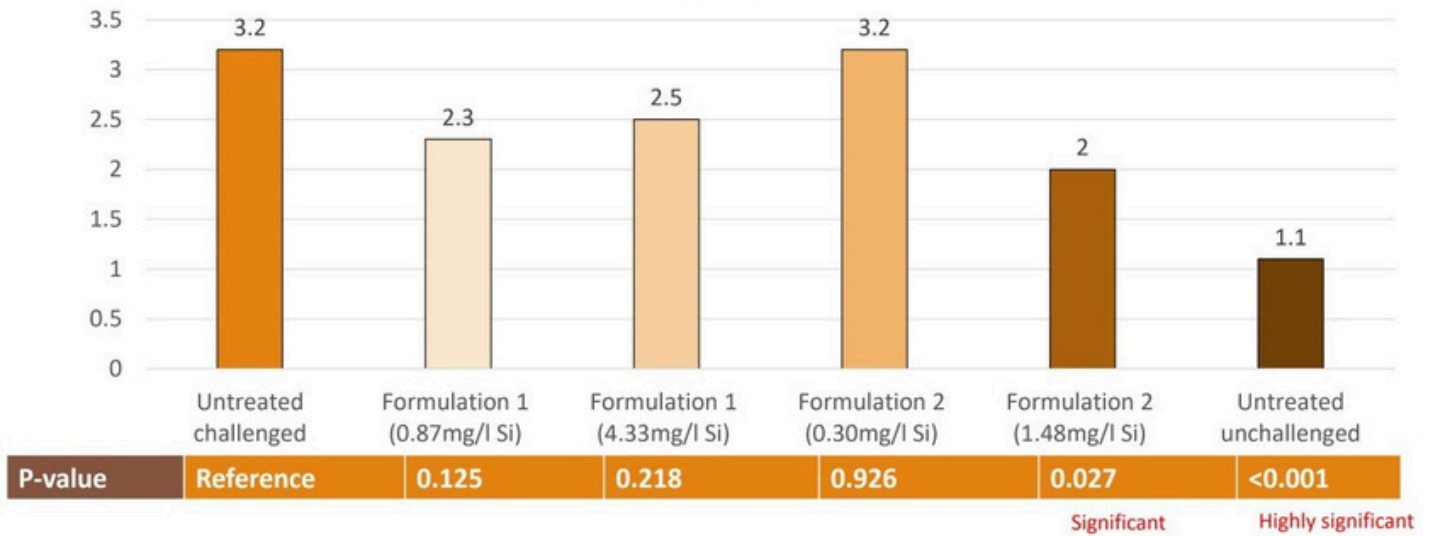


Significant improvement in feed conversion ratio suggests better performance with Poulsil® supplementation.



WELFARE TRIAL

Mean resting behaviour



Significant improvement in mean resting behavior indicates a better welfare status in birds after Poulsil[®] supplementation

Mean resting behavior was measured after inducing gouty arthritis by intra-articular injection of sodium urate. It was measured by counting the number of birds with eyes closed at 12 different times, with a 10-minute interval. There were 8 birds per replicate and 3 replicates per treatment.

MANUFACTURER:



DISTRIBUTOR:



Application (Broiler, Breeder, Layer & Turkey)

Recommended dosage : 150g/ton

(21.4 mg Si /Kg of feed)



CONTACT

Vetpharm bvba

 info@vetpharm.be

 +32 51 30 3100

 vetpharm.be

